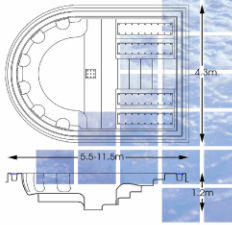




# Wickwoods

COUNTRY CLUB, HOTEL & SPA

## REFURBISHMENT PLANS 2011 - 2012



Commercial spa for heavy bathing loads manufactured out of GRP with foam insulation and mosaic tile finish.

Dimensions - 5524 x 4324 x 1200  
8524 x 4324 x 1200  
11524 x 4324 x 1200

Bather Load - 13  
Quantity of Jets - 6 Jetpools  
Features - Removable Universal Technology Jetpools  
2 x Handrails  
2 x Water cannons  
4 x Air loungers  
Volcano Pad  
Breakwater Grating  
Optional - Swimjets

**September – December 2011:**  
Extension to the existing spa with the installation of a hydro pool, larger steam room, sauna and rest area. The existing spa will be closed for a short period from the middle of December through to early January. The use of all other facilities will be unaffected.

**August 2012:**  
Lengthening and widening of our existing pool to provide an 18 x 8m pool with new filtration. The pool will be closed for a period of around 3 – 4 weeks although the new spa and all other facilities will be fully accessible.

**May – June 2011:**  
Completion of sports bar and refurbishment to other dining areas. As you will be aware, we are currently working on the new sports and family bar. This fantastic new dining facility is scheduled to open in early July and will be closely followed by a re-fit of what is currently the main dining area. The completion of both these areas will provide a significantly improved space for dining and relaxation. We shall also be introducing an entirely new menu developed and crafted by our new head chef Adrian Greene and his team. Our aim is to provide best quality fresh food at excellent value-for-money prices.



### Refurbishment Update – Spring 2011

It was always our intention to limit the membership and we are now very close to this. Soon membership will only be made available if and when an existing member decides to leave the club. The main reason for this is that we need to allow a period of time for the membership to re-balance. Since the club only re-opened in June 2010 everyone at the moment is effectively a new member. We also wish to ensure that all members enjoy a quality experience. Finally we need to be mindful of the intended improvements.

We believe that the time and care we have devoted to planning the next stage of improvements with our designers and engineers will ensure limited disturbance. Although the layout differs slightly from the original plan, the works will now deliver the same high quality facility in a shorter timeframe and with less inconvenience all round.

Over one million pounds will be invested in the club between June 2011 and June 2012. There will be a brand new reception area, gymnasium and dance studio as well as larger changing rooms and a significantly larger spa and pool.

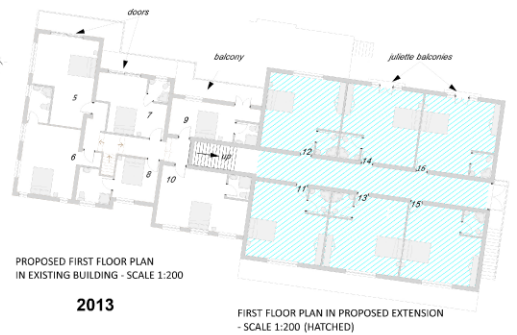
**There will be minimum disturbance during the improvements.**

Both the planning and private funding for all these works are now fully in place and we are keen to complete in the shortest possible timeframe. However, since the planned improvements are major, a balance will always have to be struck between speed and disturbance to the membership. The performance of specialist suppliers and contractors is critical in this respect as are factors outside our control, such as the weather. The above timescales must therefore be seen as provisional.

Reassuringly, the improvements will be controlled by The Hunter Group, a company related to the one which owns Wickwoods. This should ensure smooth progress. For further information see HYPERLINK "http://www.thehuntergroup.co.uk" to "http://www.thehuntergroup.co.uk" www.thehuntergroup.co.uk

A revised floor-plan showing the newly intended layout is on display outside the gym as well as on our website under "Future improvements". We will of course keep the membership fully informed regarding progress and look forward to the opening of each new area in turn. Once completed, we are confident that these works will establish Wickwoods as the premier Country Club on the South Coast.

Should you have any particular questions, observations or concerns then please email me directly at HYPERLINK "mailto:lg@wickwoods.co.uk" to "mailto:lg@wickwoods.co.uk" lg@wickwoods.co.uk



**June – August 2011:**  
Work on improved access, additional parking bays and landscaping is scheduled during this period ahead of the larger scale improvements. A further extension of the power walking track through the woods will also be laid down at this time.

**September 2011 – March 2012:** Development of new gymnasium and dance studio. This work will not affect any of the other facilities, other than the existing gym for approximately a week in late March.

**May – July 2012:** Extension and refurbishment of both the female and male changing rooms providing a generous changing environment with plenty of locker space. We anticipate little or no interruption during this period.

**BRETT INCORPORATED**  
Planning and Development Services  
**LIMITED**

7 MILL BERRY (TRADING) ESTABLISHMENT, FEENEY LANE, BURNHAM, WEST SUSSEX, BN1 9PS  
TEL: 01323 820000 FAX: 01323 820001 WEB: www.brettinc.com E: info@brettinc.com

MANAGING DIRECTOR: IAN BURNHAM  
DIRECTOR: MARK BRETHERTON  
SENIOR PROJECT MANAGER: IAN BURNHAM  
PROJECT MANAGER: IAN BURNHAM  
DRAWING: IAN BURNHAM

Client: **THE HUNTER GROUP LTD**  
Project: **WICKWOODS COUNTRY CLUB, SHAVES WOOD LANE, ALBOURNE, BN8 5DQ CLUB REFURBISHMENT AND HOTEL ROOM EXTENSION - COMPOSITE PLAN**

Drawing: **EXISTING AND PROPOSED FLOOR PLANS**

Dwg No: **0911.11/01** Date: **MAY 2011** Drawn: **PS**  
Scale: **1:200 (ORIGINAL PAPER SIZE A1)**

10cm = 20m at 1:200